

Windows Server 2016

Practical Assignment

Appendix A

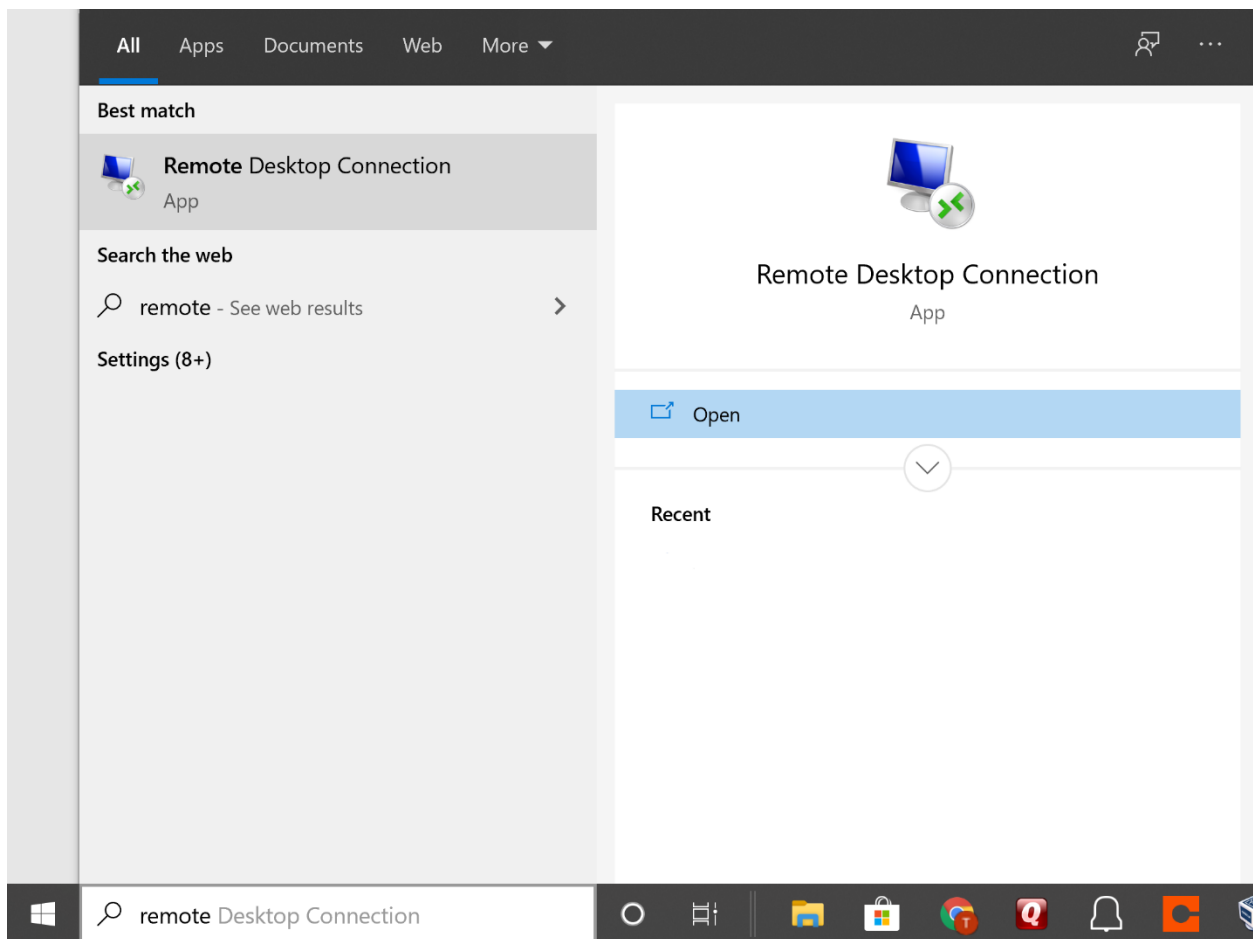
Remote Desktop

Version 1.01 (April 14, 2020)

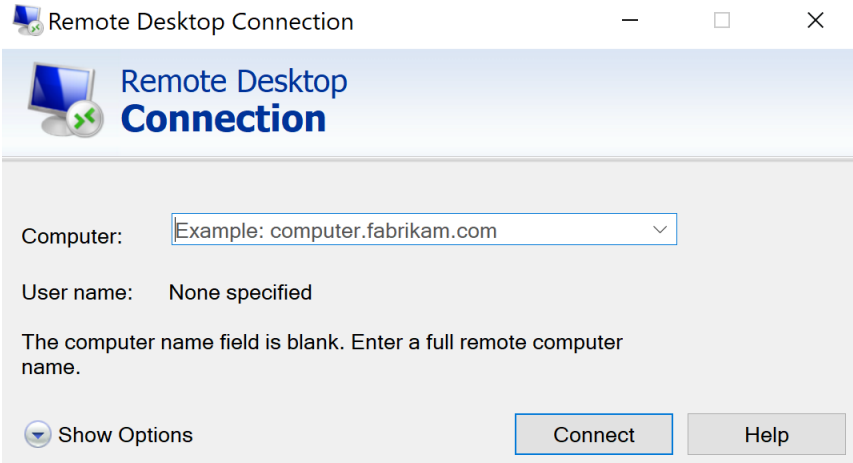
You will be doing your tasks on server01.smithgreening.net, which is running Windows Server 2016. To access the server you will need a remote desktop client. If you are running Windows 7, 8, or 10, you should have one already installed. If you are running a Linux or Mac OS X based computer, you will still be able to complete the assignment by using a compatible remote desktop client. The use of such a client is beyond the scope of this document.

On a Windows-based computer, you can access the Remote Desktop client in various ways. One such method is detailed here:

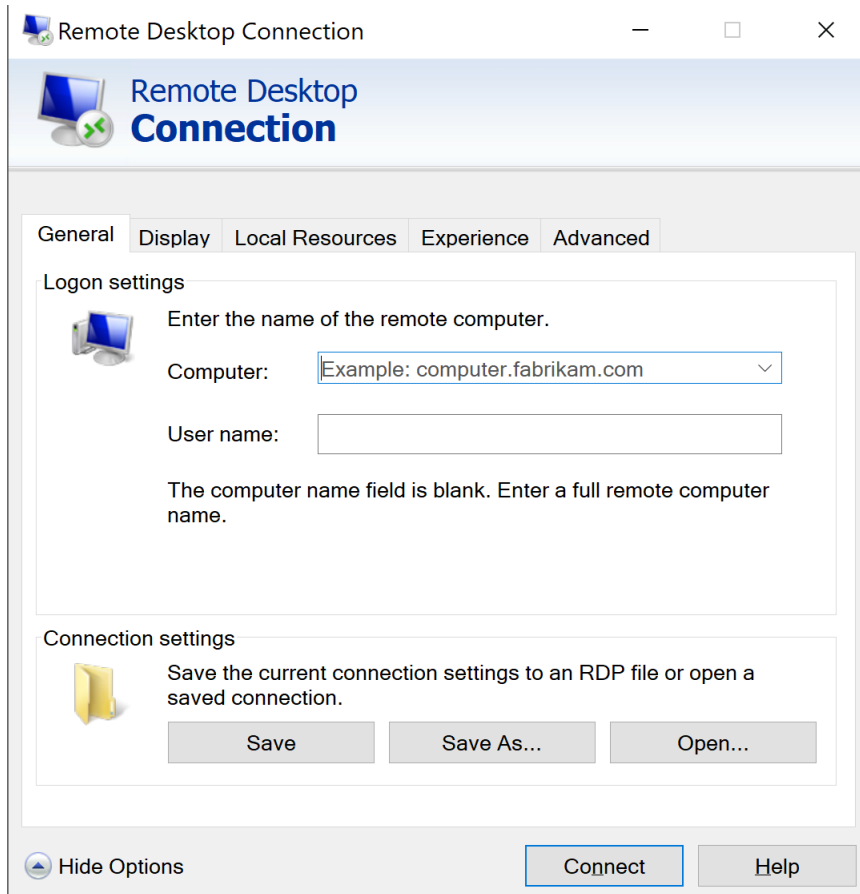
Click on the start menu, and begin typing remote desktop connection. You will soon see the Remote Desktop Application appear as an option.



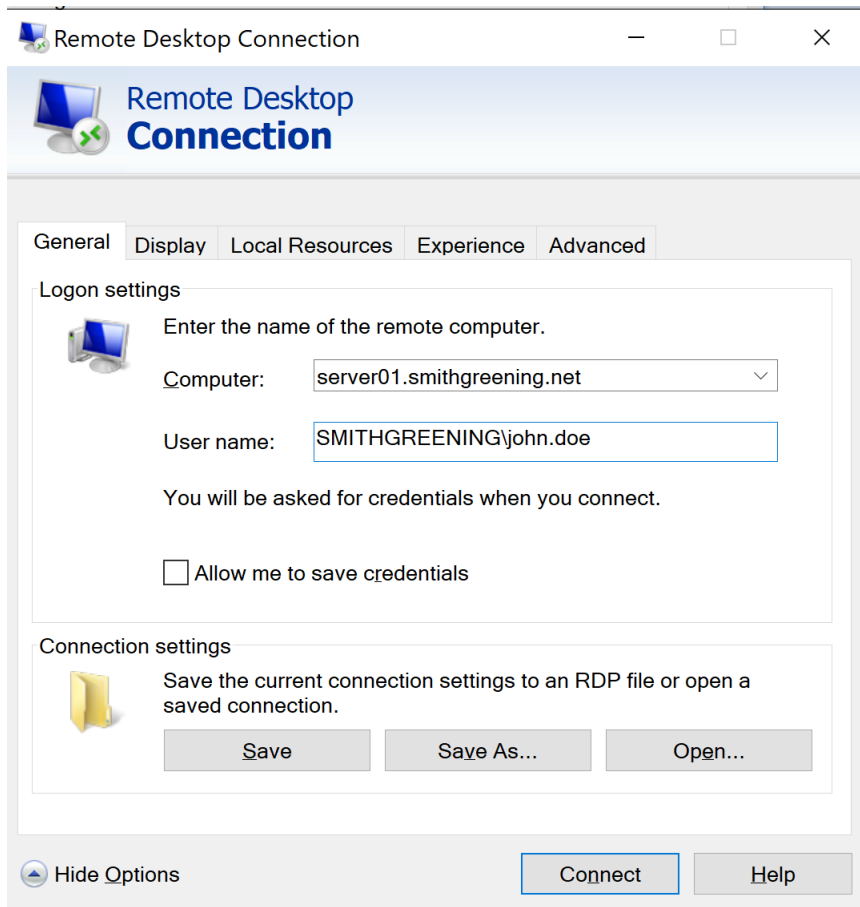
Click on the Remote Desktop Connection icon, and you will be presented with a screen similar to the following:



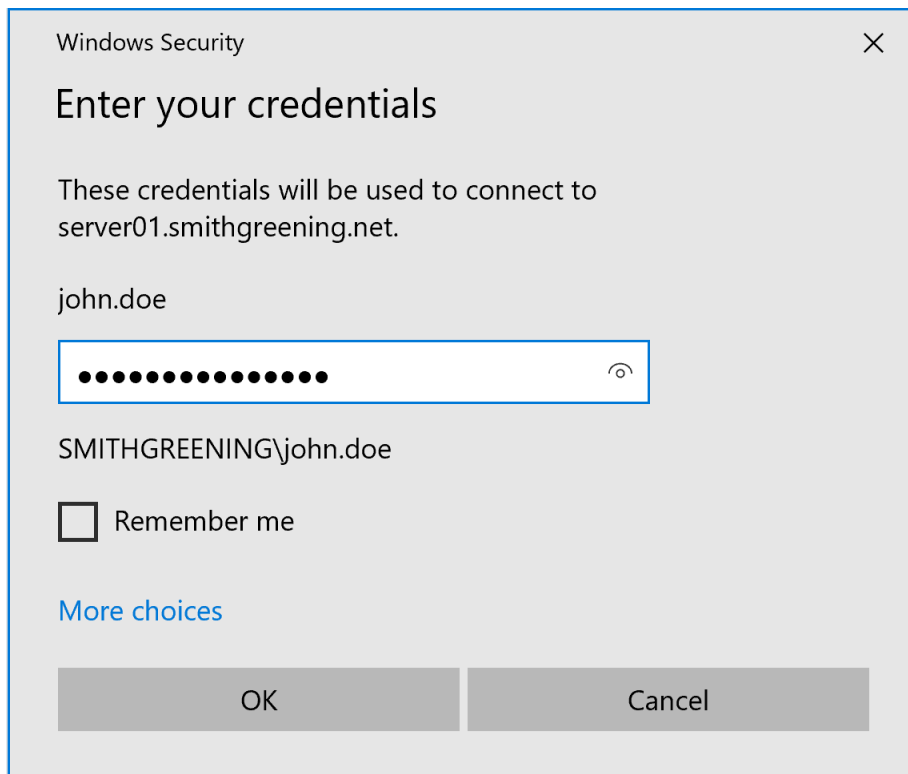
From here, click the Show Options button, where you will be presented with the following dialog box:



For Computer, type server01.smithgreening.net. For Username type SMITHGREENING\ followed by your username, which will typically be your firstname and lastname separated by a period. For example, if your name was John Doe, you would complete the dialog box as follows:

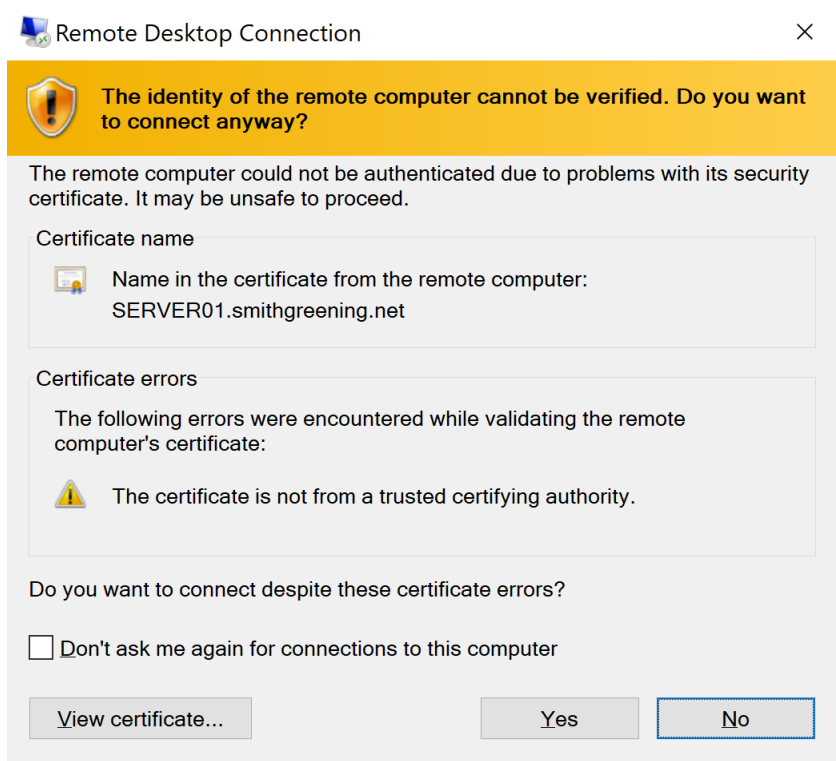


At this point, when you click the Connect button, the Remote Desktop Connection application will initiate a connection to the server. Once a connection is established, you will be prompted for your password.



Type the password that you were provided and click OK.

If the username and password match, and there are no other restrictions you are almost ready to see your remote desktop session. Because we are using what is referred to as a self-signed certificate for the remote desktop sessions, you will receive a warning message indicating that the remote computer could not be authenticated. An example is shown below.



This is normal behaviour when using a self-signed certificate. You may safely click the Yes button to connect.

You should then be presented with the desktop of your session with the server. Congratulations!

From here, a lot of your work will be through Server Manager, which should be available from the Start Menu.